



PARTS CATALOG

Published

2011/6 (Jun.)

0CNP2-G57500

Directions for the Parts Catalog.

1. The parts stipulated in this Parts Catalog are not necessarily standard equipped parts.
2. Parts may change without prior notice.
3. The following is an example of the Parts Catalog format.

REF.	LEV.	PARTS NO.	DESCRIPTION	Q'TY						I	R
				(A)	(B)	(C)	(D)	(E)	(F)		
1	1	729595-51390	FUEL INJECTION PUMP	1	1	1	1	1			1
1-1	1	729595-51391	FUEL INJECTION PUMP	1	1	1	1	1		N	1
		(A=E00185) (B=E00200)									
3	2	26022-060162	SCREW M 6X 16	9	9	9	9	9			
3-1	2	26022-060162	SCREW M 6X 16	4	4	4	4	4		K	
		(A=E00156) (B=E00156) (C=E00156) (D=E00156) (E=E00156)									
4	2	129470-51040	CAMSHAFT	1	1	1	1	1			
5	2	122710-51050	BEARING, ROLLER	2	2	2	2	2			
6	2	129470-51060	RETAINER	1	1	1	1	1			

Remarks
(1) BOOST COMPEMSATOR TYPE. OPTIONAL PART, TO E00155,(4JH-DT, 4JH-DTZ

① Ref. No.

The Ref. No. listed may not be in accordance with the illustration Ref. No.

(Ex.) Illustration No.

List Ref No.

1

1

(Before change)

1-1

(After change)

For interchangeable symbols N, R and K, illustrations for new parts may be abbreviated.

② Lev. (Level)

Level indication

The numbers below indicate the level of relativity towards the main part.

1 ----- Main parts (Assembly parts)

2 ----- Sub component included in " 1 ".

3 ----- Sub component included in " 2 ".

Note) Parts that are not for sale are partially illustrated but not listed.

③ Interchangeability Mark

When a part change takes place, one of the following interchangeability symbols is indicated beside the part.

Symbol	Interchangeability	Contents note
N	Old $\begin{matrix} \leftarrow \text{Yes} \\ \text{No} \rightarrow \end{matrix}$ New	New Part is interchangeable for Old Part but Old Part is not interchangeable for New Part.
Q	Old $\begin{matrix} \leftarrow \text{No} \\ \text{Yes} \rightarrow \end{matrix}$ New	New Part is not interchangeable for Old Part but Old Part is interchangeable for New Part.
R	Old $\begin{matrix} \leftarrow \text{Yes} \\ \text{Yes} \rightarrow \end{matrix}$ New	New/ Old Parts are both interchangeable.
S	Old $\begin{matrix} \leftarrow \text{No} \\ \text{No} \rightarrow \end{matrix}$ New	New/ Old Parts are both not interchangeable.
W		Part newly added.
Z		Part discontinued.
F		Not interchangeable by a single part but interchangeable together with related parts.
K		Changes only for used parts quantities.

④ Effective Machine No.

When a part changes, the effective Machine No. will be indicated in the (A)-(F) column.

Product Symbol	Product No.	Product Symbol	Product No.
C	Clutch No. Compressor No.	F	Machine No. (Agricultural Equip.)
D	Drive No.	M	Machine No.
E	Engine No.		

Note 1) A date may follow the symbol. (Ex.) 1996.01

Note 2) "XXXXX" and "ZZZZZ" are for parts that could not be predicted or for engine models that could not be identified.

Note 3) (A=E00185) is the E (Engine Serial Number) for the column (A) model (in this case 4JH-DT) after the parts design change.

⑤ Remarks Mark

Figures or alphabets (symbols) are entered in the remarks column.

The comments (remarks) on parts that are indicated at the bottom of the illustration are the same symbols as those stated above.

PAINTING COLOR

SECTION	PAINTING COLOR	COLOR SPRAY	MAIN PARTS	COLOR CODE (FIGURE)
Main body	YANMAR Red 1	T:0 R:-9:0 4:0:0:0:0:3	Handle frame CMP	5 0
Main body	YANMAR White	T:0 R:-9:0 2:5:0:0:0:2	Fender Handle CMP	1 4
Main body	YANMAR Plain silver M2	T:0 R:-9:0 3:1:0:0:0:3	Cover, in side CMP Engine frame CMP	1 9

Please surely use **YANMAR** Genuine color spray any **YANMAR** agricultural machines.

Given painting color may be altered for improvement, etc. without prior notice:

CONTENTS

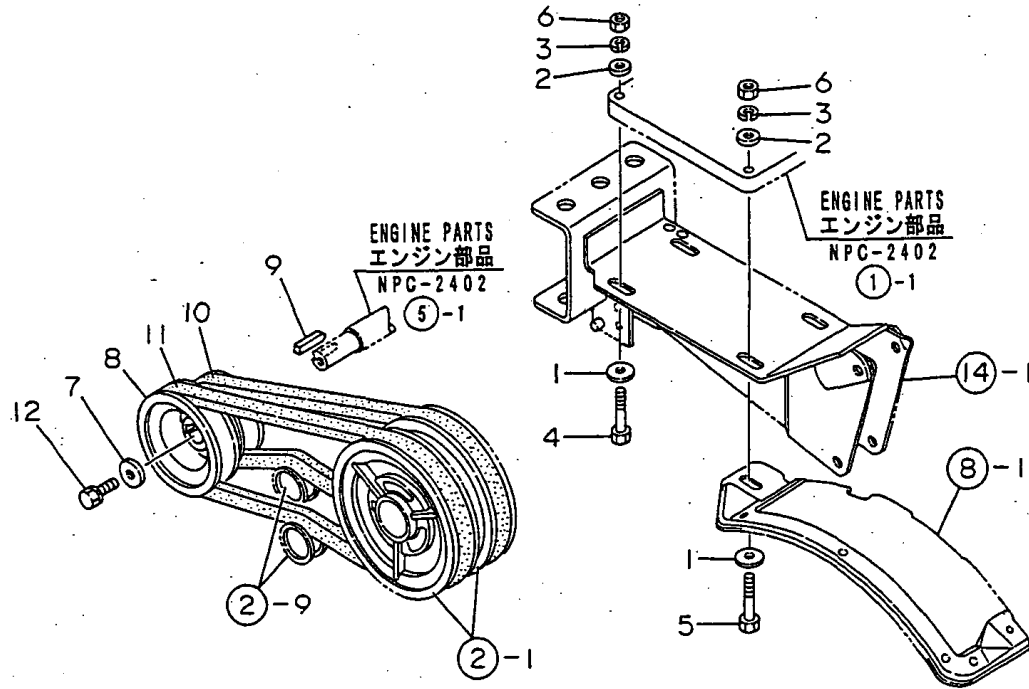
MODEL : YK682,782 ()
PC NO : 0CNP2-G57500

Fig.No.	GROUP NAME
	PULLEY & TENSION SECTION
1.	ENGINE MOUNTING & PULLEY
2.	MAIN PULLEY & TENSION
	TRANSMISSION UNIT
3.	TRANSMISSION CASE
4.	MAIN,COUNTER & REDUCT'N SHAFTS
5.	FINAL SHAFT & AXLE
6.	MAIN CHANGE
7.	SIDE CLUTCH
	WHEEL SECTION
8.	FENDER
9.	TIRE(ADDITIONAL ITEM)
	HANDLE SECTION
10.	HANDLE COLUMN(MOVE-ROUND)
11.	HANDLE
12.	CONTROL LEVER 1
13.	CONTROL LEVER 2
	ENGINE FRAME SECTION
14.	ENGINE FRAME & HITCH
15.	BELT COVER
16.	BONNET
	LABELS & ACCESSORIES SECTION
17.	ELECTRICAL PARTS
18.	LABELS
19.	LABELS & ACCESSORIES(ADD.ITEM)

Fig.No. GROUP NAME

Fig.1. ENGINE MOUNTING & PULLEY

1. ENGINE MOUNTING & PULLEY



OCNP2-G57500 1. ENGINE MOUNTING & PULLEY

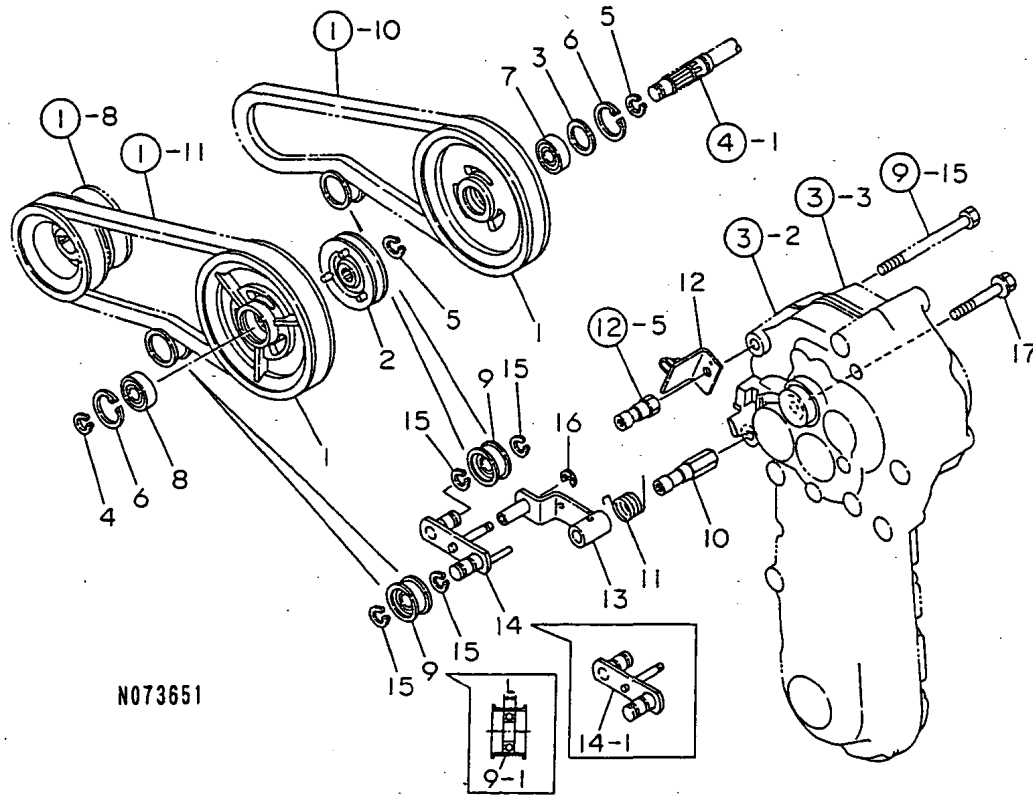
(A)=YK682C
(B)=YK682G
(C)=YK782C

(D)=YK782G
(E)=YK682P,FL
(F)=YK782P,FL

REF.	LEV.	PARTS NO.	DESCRIPTION	Q'TY						I	R
				(A)	(B)	(C)	(D)	(E)	(F)		
1	1	1D1140-11420	WASHER,PULLEY	4	4	4	4	4	4		
2	1	22137-080000	WASHER 8, POLISHED	4	4	4	4	4	4		
3	1	22217-080000	SPRING WASHER 8	4	4	4	4	4	4		
4	1	26117-080402	BOLT M 8X 40	2	2	2	2	2	2		
5	1	26117-080452	BOLT M 8X 45	2	2	2	2	2	2		
6	1	26717-080002	NUT 8	4	4	4	4	4	4		
7	1	1D1140-11420	WASHER,PULLEY	1	1	1	1	1	1		
8	1	1A2019-12000	PULLEY 582,ENGINE	1	1	1	1	1	1		
9	1	22512-050300	KEY 5X 30	1	1	1	1	1	1		
10	1	25123-003701	V-BELT	1	1	1	1				
10-1	1	1A2009-15000	V-BELT SP.H SB37	1	1	1	1	1	1	1	N
		(A=F000843) (B=F000843) (C=F000436) (D=F000436)									
10-2	1	1A2009-15001	V-BELT,W500 SB37	1	1	1	1	1	1	1	N
		(A=FXXXXX) (B=FXXXXX) (C=FXXXXX) (D=FXXXXX) (E=FXXXXX) (F=FXXXXX)									
11	1	25123-003801	V-BELT	1	1	1	1				
11-1	1	1A2001-15000	V-BELT SP.H 8B38	1	1	1	1	1	1	1	N
		(A=F000843) (B=F000843) (C=F000436) (D=F000436)									
11-2	1	1A2001-15001	V-BELT,W500 SB38	1	1	1	1	1	1	1	N
		(A=FXXXXX) (B=FXXXXX) (C=FXXXXX) (D=FXXXXX) (E=FXXXXX) (F=FXXXXX)									
12	1	26013-080164	BOLT M 8X 16	1	1	1	1	1	1		
12-1	1	26013-080162	BOLT W/WASHER M8X16	1	1	1	1	1	1	1	R
		(A=FZZZZZ) (B=FZZZZZ) (C=FZZZZZ) (D=FZZZZZ) (E=FZZZZZ) (F=FZZZZZ)									

Fig.2. MAIN PULLEY & TENSION

2. MAIN PULLEY & TENSION



OCNP2-G57500 2. MAIN PULLEY & TENSION

(A)=YK682C
(B)=YK682G
(C)=YK782C

(D)=YK782G
(E)=YK682P,FL
(F)=YK782P,FL

REF.	LEV.	PARTS NO.	DESCRIPTION	QTY						I	R
				(A)	(B)	(C)	(D)	(E)	(F)		
1	1	1A2009-13300	PULLEY 154,MN.SHAFT	2	2	2	2				
1-1	1	1A2009-13301	PULLEY 154,MN.SHAFT	2	2	2	2	2	2		N
		(A=F000843)	(B=F000843)	(C=F000436)	(D=F000436)						
2	1	1A2009-13341	SHIFTER	1	1	1	1				
2-1	1	1A2009-13342	SHIFTER	1	1	1	1	1	1		R
		(A=FXXX)	(B=FXXX)	(C=FXXX)	(D=FXXX)						
3	1	1A1105-23210	LINER, 34X24.2X1.0	1	1	1	1	1	1		
4	1	22242-000150	CIRCLIP 15	1	1	1	1	1	1		
5	1	22242-000170	CIRCLIP 17	2	2	2	2	2	2		
6	1	22252-000350	CIRCLIP 35	2	2	2	2	2	2		
7	1	24104-060034	BALL BEARING	1	1	1	1	1	1		
8	1	24104-062024	BALL BEARING	1	1	1	1	1	1		
9	1	1E4060-10040	ROLLER,TENSION	2	2	2	2				1
9-1	1	1A2001-13050	ROLLER CMP,TENSION	2	2	2	2				S
		(A=F000237)	(B=F000237)	(C=F000201)	(D=F000201)						
9-2	1	1A2001-13051	ROLLER CMP,TENSION	2	2	2	2	2	2		N
		(A=FXXX)	(B=FXXX)	(C=FXXX)	(D=FXXX)						
10	1	1A2000-13100	NUT,TENSION	1	1	1	1	1	1		
11	1	1A2000-13190	SPRING,TENSION RETRN	1	1	1	1	1	1		
12	1	1A2000-13200	BRACKET COMPL.,WIRE	1	1	1	1	1	1		
13	1	1A2009-13510	ARM COMP.,TENSION	1	1	1	1	1	1		
14	1	1A2009-13540	ARM CMP,TENSION AUX.	1	1	1	1				
14-1	1	1A2001-13100	ARM CMP,TENSION AUX.	1	1	1	1	1	1		S
		(A=F000237)	(B=F000237)	(C=F000201)	(D=F000201)						
15	1	22242-000150	CIRCLIP 15	4	4	4	4	4	4		
16	1	22272-000060	CIRCLIP E- 6	1	1	1	1	1	1		
17	1	26137-100702	BOLT M10X 70 PLATED	1	1	1	1	1	1		

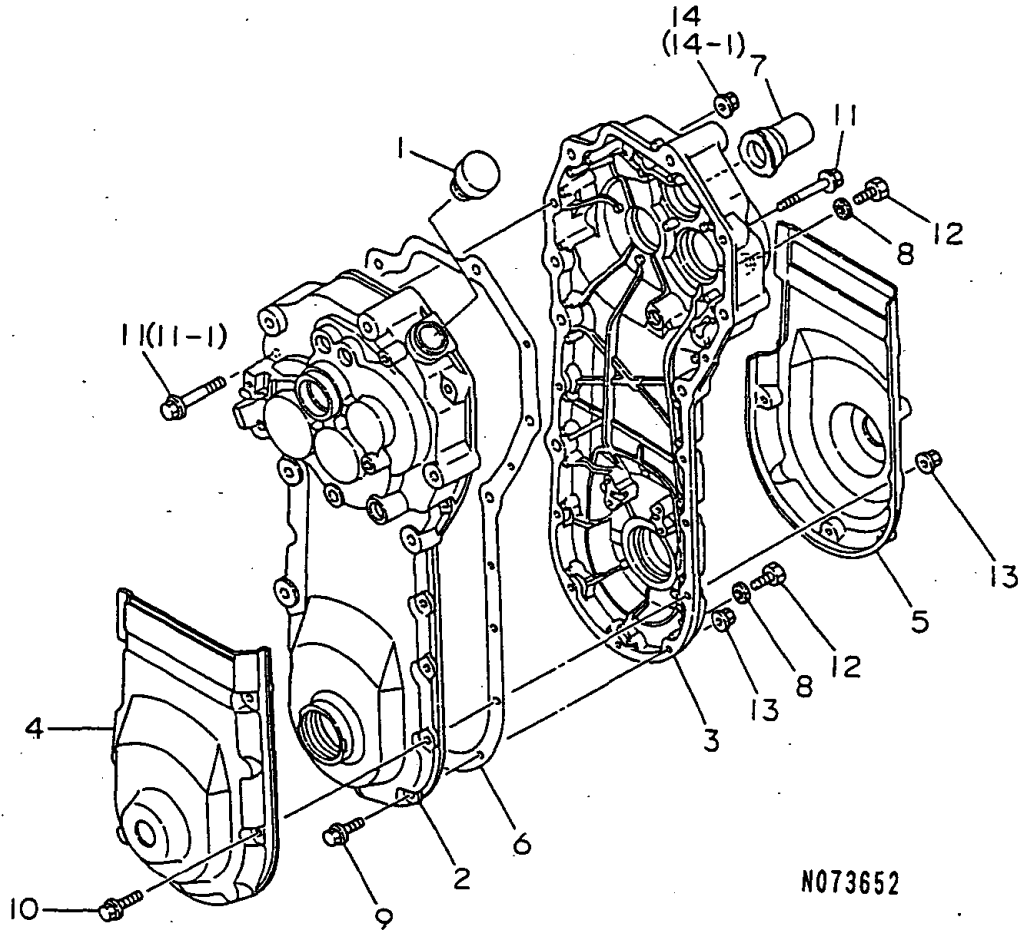
Remarks

(1)L= REFER.NO.9 11M/M,9-1 9M/M.

N:Old $\begin{matrix} \leftarrow \text{Yes} \\ \text{No} \end{matrix}$ New, Q:Old $\begin{matrix} \leftarrow \text{No} \\ \text{Yes} \end{matrix}$ New, R:Old $\begin{matrix} \leftarrow \text{Yes} \\ \text{Yes} \end{matrix}$ New, S:Old $\begin{matrix} \leftarrow \text{No} \\ \text{No} \end{matrix}$ New, W:Add, Z:Discontinued, F:Interchangeable by set, K:Q'ty Change

Fig.3. TRANSMISSION CASE

3. TRANSMISSION CASE



N073652

0CNP2-G57500 3. TRANSMISSION CASE

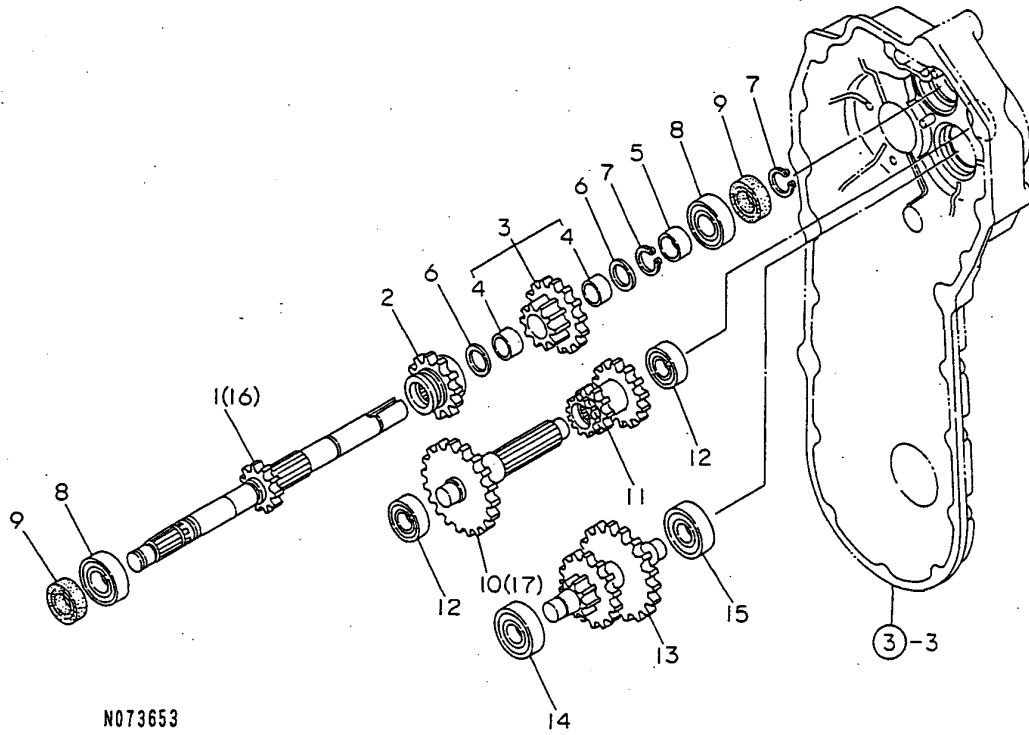
(A)=YK682C
(B)=YK682G
(C)=YK782C

(D)=YK782G
(E)=YK682P,FL
(F)=YK782P,FL

REF.	LEV.	PARTS NO.	DESCRIPTION	QTY						I	R
				(A)	(B)	(C)	(D)	(E)	(F)		
1	1	1A1470-20090	CAP 35,OIL FILLER	1	1	1	1	1	1		
2	1	1A2000-21100	CASE L,TRANSMISSION	1	1	1	1	1	1		
3	1	1A2000-21110	CASE R,TRANSMISSION	1	1	1	1	1	1		
4	1	1A2000-21150	COVER L,PROTECTIVE	1	1	1	1	1	1		
5	1	1A2000-21160	COVER R,PROTECTIVE	1	1	1	1	1	1		
6	1	1A2000-21200	PACKING,TRANSM.CASE	1	1	1	1	1	1		
7	1	1A1220-28290	CAP,P.T.O.	1	1	1	1	1	1		
8	1	23414-080000	GASKET 8, ROUND	2	2	2	2	2	2		
9	1	26106-060252	BOLT M 6X 25 PLATED	5	5	5	5	5	5		
10	1	26106-060302	BOLT M 6X 30 PLATED	4	4	4	4	4	4		
11	1	26107-080502	BOLT M 8X 50 PLATED	2	2	2	2	2	2		
11-1	1	26107-080502	BOLT M 8X 50 PLATED		1		1				K
(B=F000843) (D=F000436)											
12	1	26117-080122	BOLT M 8X 12 PLATED	2	2	2	2				
12-1	1	1A2001-21250	BOLT M8X12,COLLAR HD	2	2	2	2	2	2		S
(A=F000973) (B=F000973) (C=F000456) (D=F000456)											
13	1	26367-060002	NUT M 6	9	9	9	9	9	9		
14	1	26367-080002	U-NUT M 8	2	2	2	2				
14-1	1	26367-080002	U-NUT M 8	1	1	1	1	1	1		K
(A=F000843) (B=F000843) (C=F000436) (D=F000436)											

Fig.4. MAIN,COUNTER & REDUCT'N SHAFTS

4. MAIN,COUNTER & REDUCT'N SHAFTS



N073653

OCNP2-G57500 4. MAIN,COUNTER & REDUCT'N SHAFTS

(A)=YK682C
(B)=YK682G
(C)=YK782C

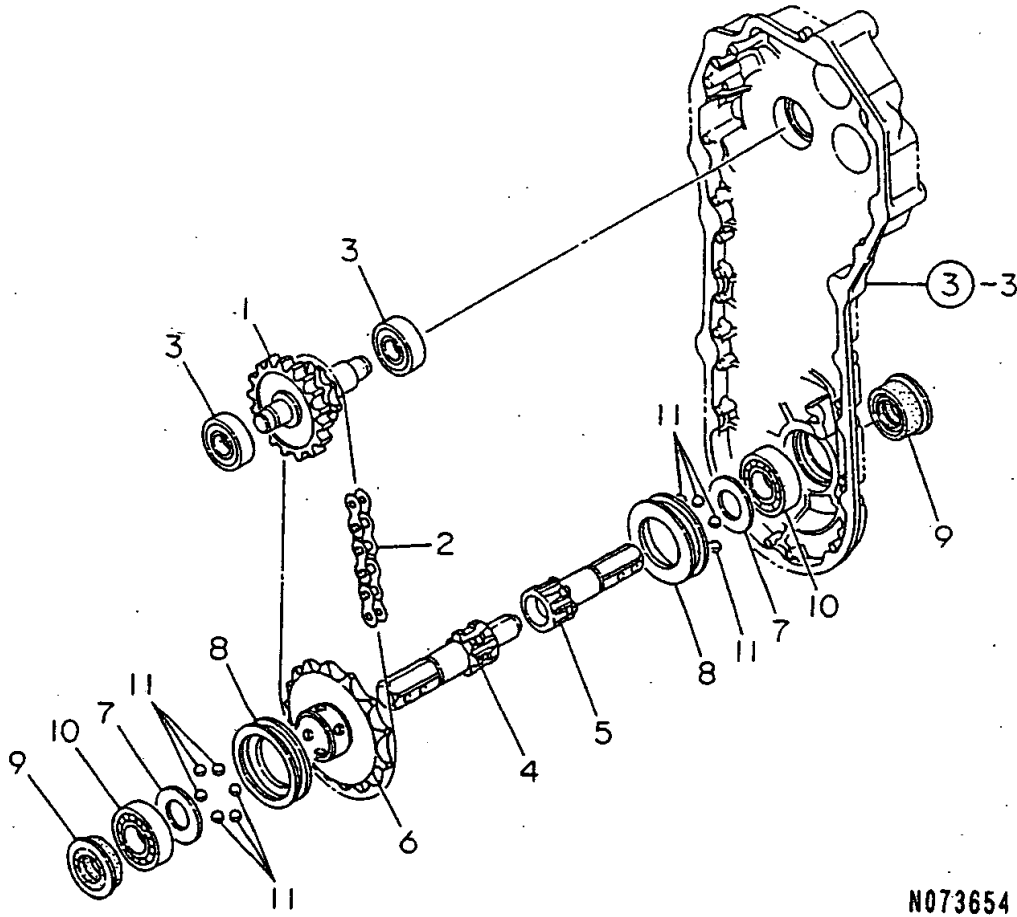
(D)=YK782G
(E)=YK682P,FL
(F)=YK782P,FL

REF.	LEV.	PARTS NO.	DESCRIPTION	QTY						I	R
				(A)	(B)	(C)	(D)	(E)	(F)		
1	1	1A2009-23000	SHAFT COMPL.,MAIN	1	1	1	1	1	1		
2	1	1A2000-23012	GEAR 23 SLIDE	1	1	1	1	1	1		
3	1	1A2009-23030	GEAR 15X27 COMPL.	1	1	1	1	1	1		
4	2	1A2000-23020	BUSH 17X10,DRY	2	2	2	2	2	2		
5	1	1A2000-23070	COLLAR 18X22X11	1	1	1	1	1	1		
6	1	1E4060-74090	LINER 17X24X1	2	2	2	2	2	2		
7	1	22242-000170	CIRCLIP 17	2	2	2	2	2	2		
8	1	24101-062034	BALL BEARING	2	2	2	2	2	2		
9	1	24421-173208	SEAL TC17.32 08, OIL	2	2	2	2	2	2		
10	1	1A2009-23100	SHAFT COMP.,COUNTER	1	1	1	1	1	1		
11	1	1A2009-23140	GEAR 15X23,SLIDE	1	1	1	1	1	1		
12	1	24101-062024	BALL BEARING	2	2	2	2	2	2		
13	1	1A2000-23200	SHAFT COMP.,REDUCTN	1	1	1	1	1	1		
14	1	1A2000-23251	BEARING 6302-9T3C	1	1	1	1	1	1		
15	1	24101-063024	BALL BEARING	1	1	1	1	1	1		
16	1	1A2019-23060	AXLE SHAFT (582							1	1
17	1	1A2000-23100	SHAFT COMPL.,COUNTER							1	1

Remarks
(1)EXCLUSIVE FOR YK682FL,782FL.

Fig.5. FINAL SHAFT & AXLE

5. FINAL SHAFT & AXLE



5. FINAL SHAFT & AXLE

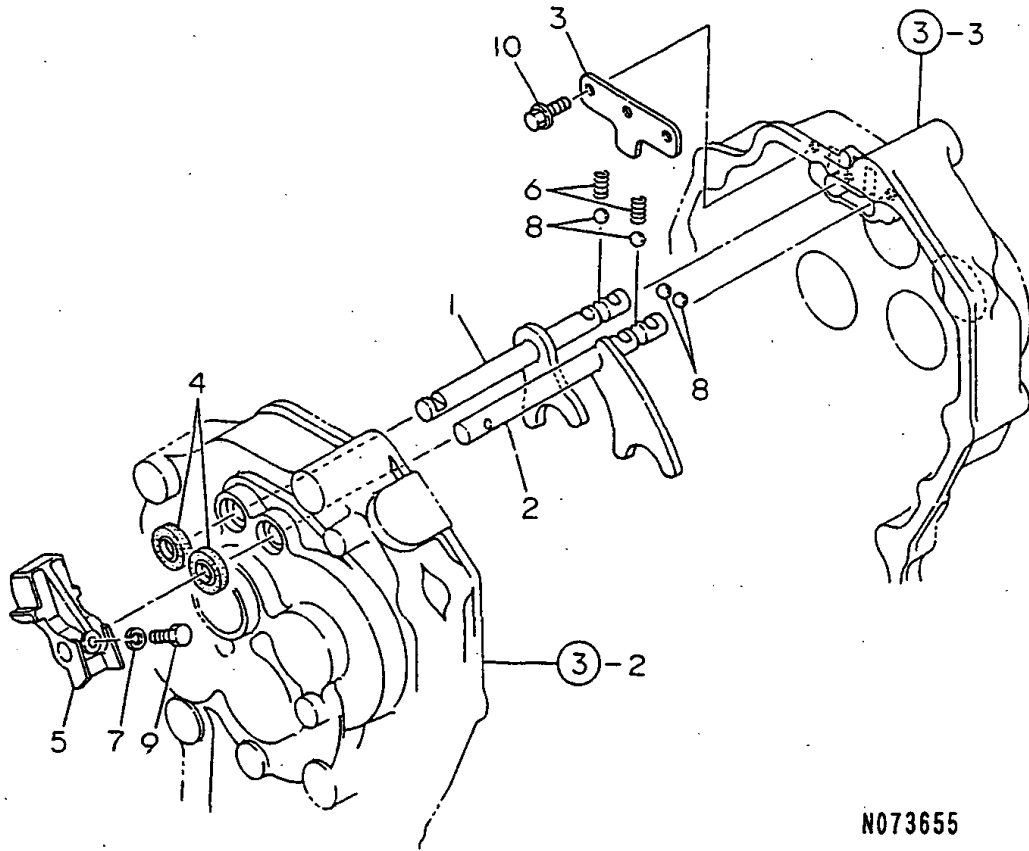
(A)=YK682C
(B)=YK682G
(C)=YK782C

(D)=YK782G
(E)=YK682P,FL
(F)=YK782P,FL

REF.	LEV.	PARTS NO.	DESCRIPTION	Q'TY						I	R
				(A)	(B)	(C)	(D)	(E)	(F)		
1	1	1A2000-23301	SHAFT COMPL.,FINAL	1	1	1	1	1	1		
2	1	1A1479-23480	CHAIN 50X52,ROLLER	1	1	1	1	1	1		
3	1	24101-063034	BALL BEARING	2	2	2	2	2	2		
4	1	1A2009-24501	AXLE A	1	1	1	1	1	1		
5	1	1A2009-24511	AXLE B	1	1	1	1	1	1		
6	1	1A2000-24520	SPROCKET,AXLE	1	1	1	1	1	1		
7	1	1A2000-24530	LINER 27X45X2	2	2	2	2	2	2		
8	1	1A2000-24550	SHIFTER	2	2	2	2	2	2		
9	1	1A2000-24600	SEAL 254411,OIL	2	2	2	2	2	2		
10	1	24101-062054	BEARING #6205	2	2	2	2	2	2		
11	1	24190-120001	BALL 3/8,STEEL	12	12	12	12	12	12		

Fig.6. MAIN CHANGE

6. MAIN CHANGE



OCNP2-G57500 6. MAIN CHANGE

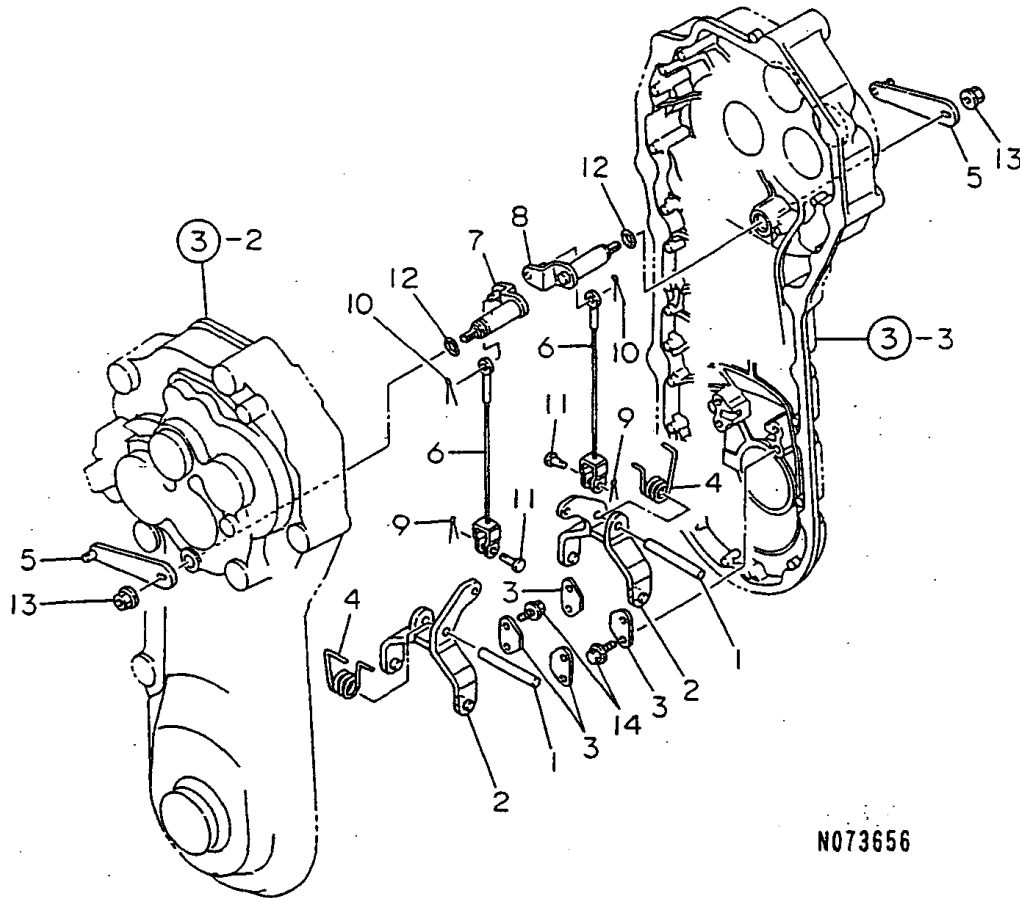
(A)=YK682C
(B)=YK682G
(C)=YK782C

(D)=YK782G
(E)=YK682P,FL
(F)=YK782P,FL

REF.	LEV.	PARTS NO.	DESCRIPTION	QTY						I	R
				(A)	(B)	(C)	(D)	(E)	(F)		
1	1	1A2000-27010	SHAFT A COMP.,FORK	1	1	1	1	1	1		
2	1	1A2000-27051	SHAFT B COMP.,FORK	1	1	1	1	1	1		
3	1	1A2000-27100	PLATE,BALL KEEP	1	1	1	1	1	1		
4	1	1A1104-28230	OIL SEAL 12184	2	2	2	2	2	2		
5	1	1A2000-55241	BRACKET,CHANGE LEVER	1	1	1	1	1	1		
6	1	1E6150-56040	SPRING	2	2	2	2	2	2		
7	1	22217-060000	SPRING WASHER 6	1	1	1	1	1	1		
8	1	24190-100001	BALL 5/16, STEEL	4	4	4	4	4	4		
9	1	26116-060162	BOLT 6X16	1	1	1	1	1	1		
10	1	26476-060142	BOLT M 6X 14,TAPPING	3	3	3	3	3	3		

Fig.7. SIDE CLUTCH

7. SIDE CLUTCH



N073656

OCNP2-G57500 7. SIDE CLUTCH

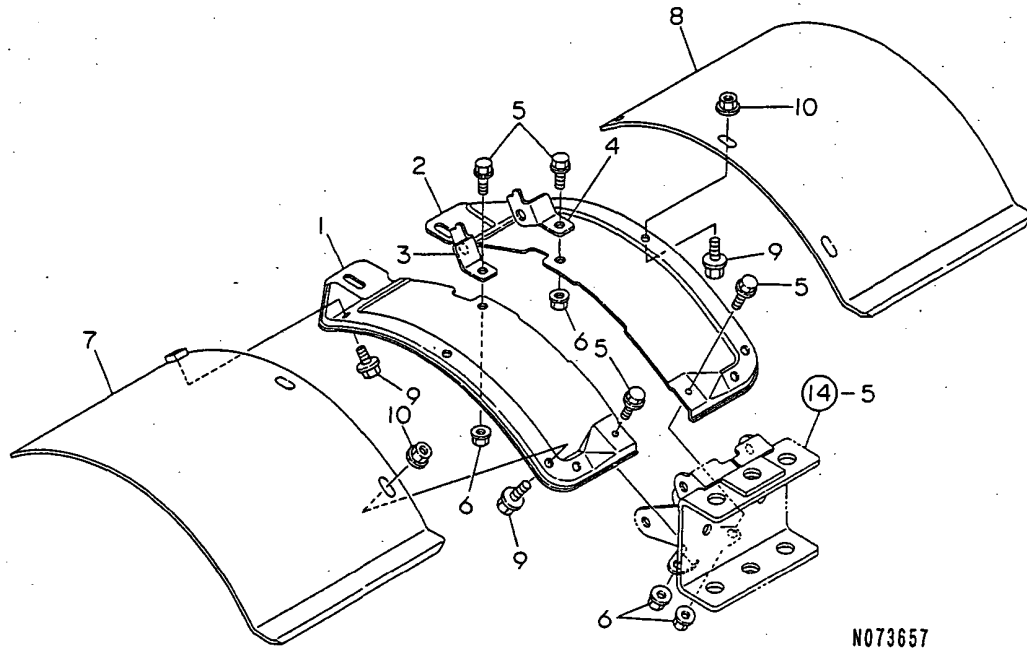
(A)=YK682C
(B)=YK682G
(C)=YK782C

(D)=YK782G
(E)=YK682P,FL
(F)=YK782P,FL

REF.	LEV.	PARTS NO.	DESCRIPTION	QTY						I	R
				(A)	(B)	(C)	(D)	(E)	(F)		
1	1	1A1470-20700	PIN 8X55	2	2	2	2	2	2		
2	1	1A2000-27530	FORK COMP.,SD.CLUTCH	2	2	2	2	2	2		
3	1	1A2000-27600	PLATE,SD.CLUTCH KEEP	4	4	4	4	4	4		
4	1	1A2000-27650	SPRING,SD.CLUTCH TORS	2	2	2	2	2	2		
5	1	1A2000-27700	ARM COMP.,SD.CLUTCH	2	2	2	2	2	2		
6	1	1A2000-27750	CABLE 163	2	2	2	2	2	2		
7	1	1A2000-27800	SHAFT L CMP,SD.CLUTCH	1	1	1	1	1	1		
8	1	1A2000-27840	SHAFT R CMP,SD.CLUTCH	1	1	1	1	1	1		
9	1	22417-160120	COTTER PIN 1.6X12	2	2	2	2	2	2		
10	1	22417-200120	COTTER PIN 2.0X12	2	2	2	2	2	2		
11	1	22487-060120	PIN,FLAT HEAD 6X 12	2	2	2	2	2	2		
12	1	24311-000100	O-RING 1A P-10.0	2	2	2	2	2	2		
13	1	26367-080002	U-NUT M 8	2	2	2	2	2	2		
14	1	26476-060142	BOLT M 6X 14,TAPPING	8	8	8	8	8	8		

Fig.8. FENDER

8. FENDER



N073657

OCNP2-G57500 8. FENDER

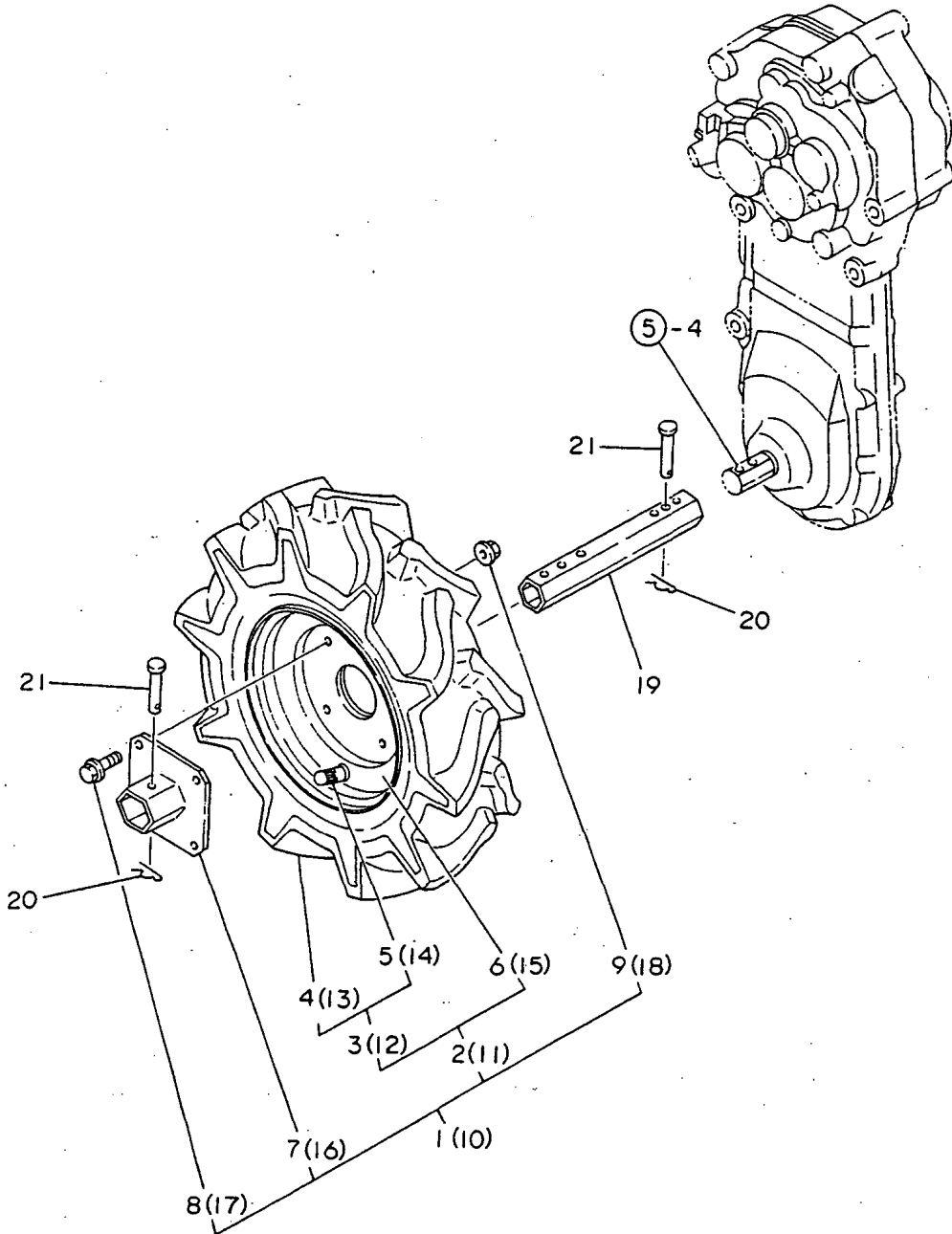
(A)=YK682C
(B)=YK682G
(C)=YK782C

(D)=YK782G
(E)=YK682P,FL
(F)=YK782P,FL

REF.	LEV.	PARTS NO.	DESCRIPTION	Q'TY						I	R
				(A)	(B)	(C)	(D)	(E)	(F)		
1	1	1A2019-32000	FENDER L 1.0	1	1	1	1	1	1		
2	1	1A2019-32010	FENDER R 1.0	1	1	1	1	1	1		
3	1	1A2019-32100	STAY L,FENDER MTG.	1	1	1	1	1	1		
4	1	1A2019-32110	STAY R,FENDER MTG.	1	1	1	1	1	1		
5	1	26107-080122	BOLT M 8X 12 PLATED	4	4	4	4	4	4		
6	1	26367-080002	U-NUT M 8	4	4	4	4	4	4		
7	1	1A2138-32090	FENDER,EXTENSION	1	1	1	1	1	1	1	W
		(A=FXXXXXX) (B=F001298) (C=FXXXXXX) (D=FXXXXXX)						(E=F001373)	(F=F000701)		
8	1	1A2138-32150	FENDER,EXTENSION	1	1	1	1	1	1	1	W
		(A=FXXXXXX) (B=F001298) (C=FXXXXXX) (D=FXXXXXX)						(E=F001373)	(F=F000701)		
9	1	26106-080122	BOLT M 8X 12 PLATED	6	6	6	6	6	6	6	W
		(A=FXXXXXX) (B=F001298) (C=FXXXXXX) (D=FXXXXXX)						(E=F001373)	(F=F000701)		
10	1	26367-080002	U-NUT M 8	5	5	5	5	5	5	5	W
		(A=FXXXXXX) (B=F001298) (C=FXXXXXX) (D=FXXXXXX)						(E=F001373)	(F=F000701)		

Fig.9. TIRE(ADDITIONAL ITEM)

9. TIRE(ADDITIONAL ITEM)



OCNP2-G57500 9. TIRE(ADDITIONAL ITEM)

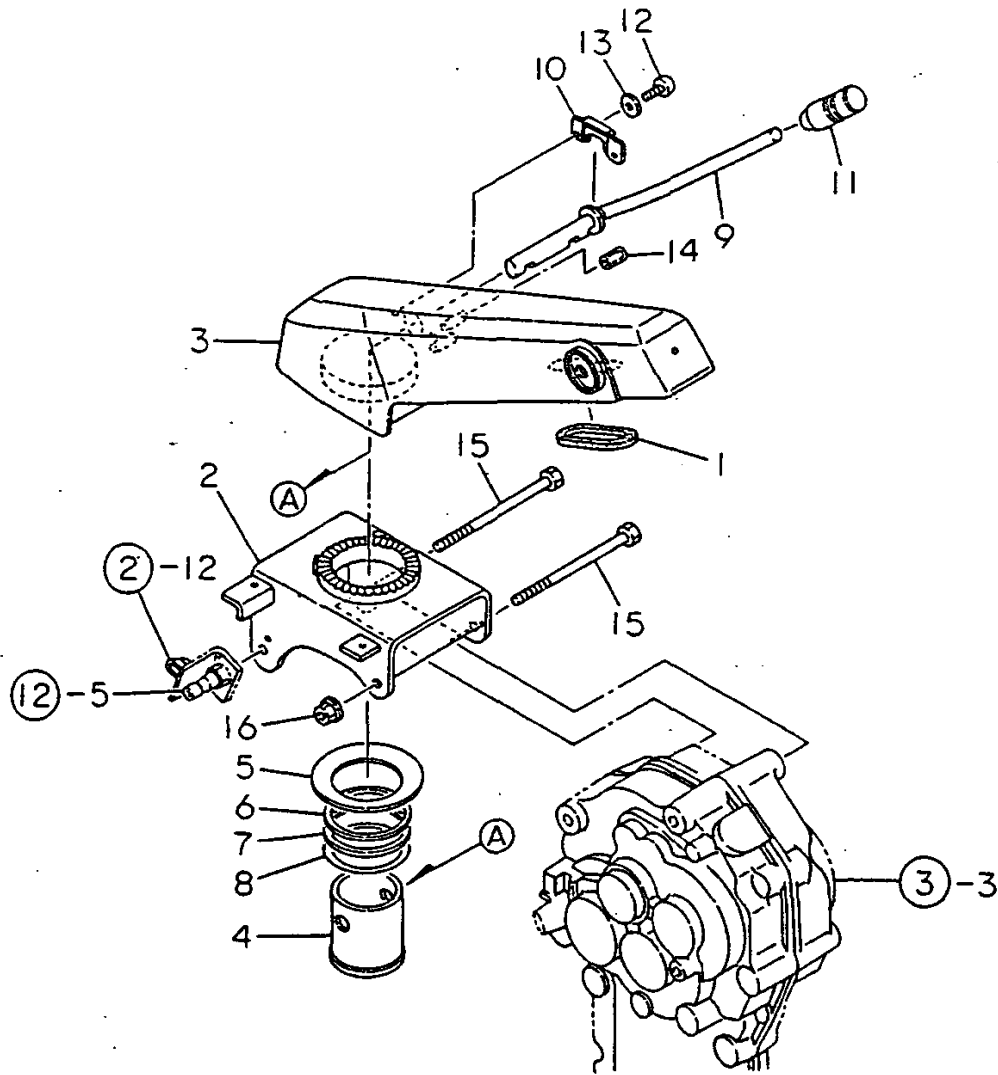
(A)=YK682C
(B)=YK682G
(C)=YK782C

(D)=YK782G
(E)=YK682P,FL
(F)=YK782P,FL

REF.	LEV.	PARTS NO.	DESCRIPTION	Q'TY						I	R	
				(A)	(B)	(C)	(D)	(E)	(F)			
1	1	1A2019-31010	TIRE 4.00-8L W/FLNG.		1		1					
2	2	1A2040-31030	TIRE L W/WHEEL		1		1					
3	3	1A2040-31050	TIRE 4.00-8 W/O WHL.		1		1					
4	4	1A2040-31070	TIRE 4.00-8		1		1					
5	4	1A2040-31090	VALVE TR412		1		1					
6	3	1A2040-31100	WHEEL 4.00-8		1		1					
7	2	1A2015-31210	FLANGE COMP.,WHEEL		1		1					
8	2	26107-080182	BOLT M 8X 18 PLATED		4		4					
9	2	26367-080002	U-NUT M 8		4		4					
10	1	1A2019-31020	TIRE 4.00-8R W/FLNG.		1		1					
11	2	1A2040-31040	TIRE R W/WHEEL		1		1					
12	3	1A2040-31050	TIRE 4.00-8 W/O WHL.		1		1					
13	4	1A2040-31070	TIRE 4.00-8		1		1					
14	4	1A2040-31090	VALVE TR412		1		1					
15	3	1A2040-31100	WHEEL 4.00-8		1		1					
16	2	1A2015-31210	FLANGE COMP.,WHEEL		1		1					
17	2	26107-080182	BOLT M 8X 18 PLATED		4		4					
18	2	26367-080002	U-NUT M 8		4		4					
19	1	1A2019-31100	PIPE E250,AXLE		2		2					
20	1	1A1540-46020	PIN 8,SNAP		4		4					
21	1	22486-080450	PIN 8X 45		4		4					

Fig.10. HANDLE COLUMN(MOVE-ROUND)

10. HANDLE COLUMN(MOVE-ROUND)



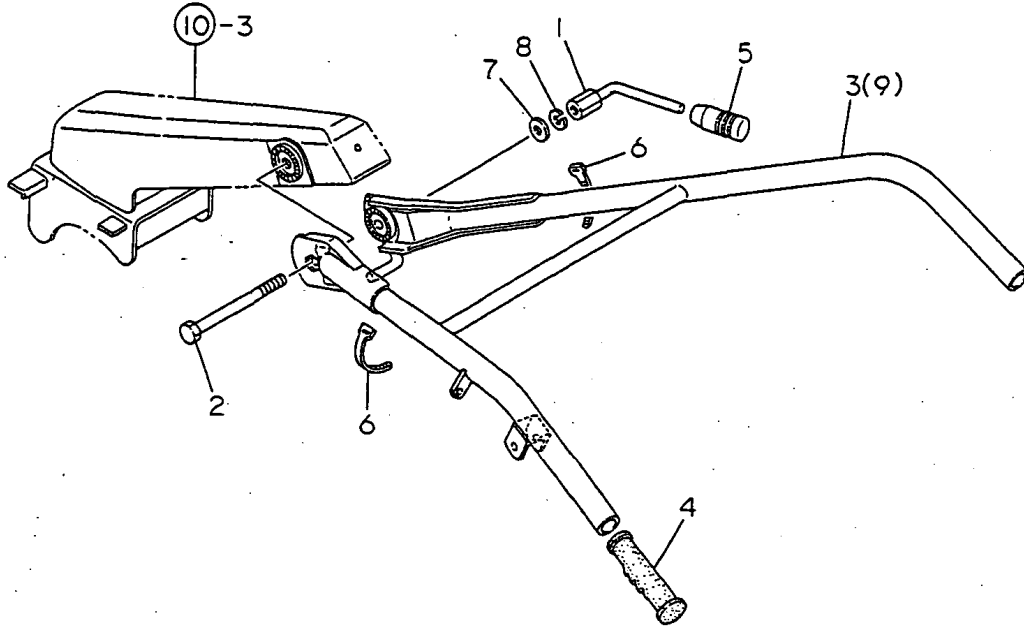
(A)=YK682C
(B)=YK682G
(C)=YK782C

(D)=YK782G
(E)=YK682P,FL
(F)=YK782P,FL

REF.	LEV.	PARTS NO.	DESCRIPTION	QTY						I	R
				(A)	(B)	(C)	(D)	(E)	(F)		
1	1	1A1470-40301	BAND,WIRE PROTECTIVE	1	1	1	1	1	1		
I 2	1	1A2000-51000	COLUMN COMP.,HANDLE	1	1	1	1	1	1		
3	1	1A2000-51100	FRAME COMP.,HANDLE	1	1	1	1				
3-1	1	1A2000-51101	FRAME COMP.,HANDLE	1	1	1	1	1	1		R
		(A=FXXX)	(B=FXXX)	(C=FXXX)	(D=FXXX)						
4	1	1A2000-51250	BAR,MOVE-RD.CORE	1	1	1	1	1	1		
5	1	1A2000-51280	SPRING,BELLEVILLE	1	1	1	1	1	1		
6	1	1A2000-51310	SHIM 57X65X1	1	1	1	1	1	1		
7	1	1A2000-51320	SHIM 57X65X0.8	1	1	1	1	1	1		
8	1	1A2000-51330	SHIM 57X65X0.6	1	1	1	1	1	1		
I 9	1	1A2000-51350	LEVER COMP.,MV-RD.	1	1	1	1	1	1		
10	1	1A2000-51450	PLATE,MV-RD.LVR.CHK.	1	1	1	1	1	1		
11	1	1E6570-65750	GRIP,CONT.LEVER BLK.	1	1	1	1	1	1		
12	1	1A1750-90050	SCREW 5X10,TAPPING	2	2	2	2	2	2		
13	1	1A1750-90150	WASHER 5,PLAIN	2	2	2	2	2	2		
14	1	23061-070015	PIPE 7X 15	1	1	1	1	1	1		
15	1	26156-101202	BOLT(10X120)	2	2	2	2	2	2		
16	1	26377-100002	U-NUT M10	1	1	1	1	1	1		

Fig.11. HANDLE

11. HANDLE



OCNP2-G57500 11. HANDLE

(A)=YK682C
(B)=YK682G
(C)=YK782C

(D)=YK782G
(E)=YK682P,FL
(F)=YK782P,FL

REF.	LEV.	PARTS NO.	DESCRIPTION	Q'TY						I	R
				(A)	(B)	(C)	(D)	(E)	(F)		
1	1	1A2000-51400	LEVER CMP.,HANDLE LC	1	1	1	1	1	1		
2	1	1A2000-51430	BOLT 12X125	1	1	1	1	1	1		
3	1	1A2009-51600	HANDLE COMPL.	1	1	1	1	1	1		
4	1	192040-56220	GRIP,HANDLE	2	2	2	2	2	2		
5	1	1E6570-65750	GRIP,CONT.LEVER BLK.	1	1	1	1	1	1		
6	1	1E6102-84970	BAND 140,WIRE LOCK	2	2	2	2	2	2		
7	1	22137-120000	WASHER 12,POLISHED	1	1	1	1	1	1		
8	1	22217-120000	SPRING WASHER 12	1	1	1	1	1	1		
9	1	1A2019-51700	HANDLE(582 CMP						1	1	1

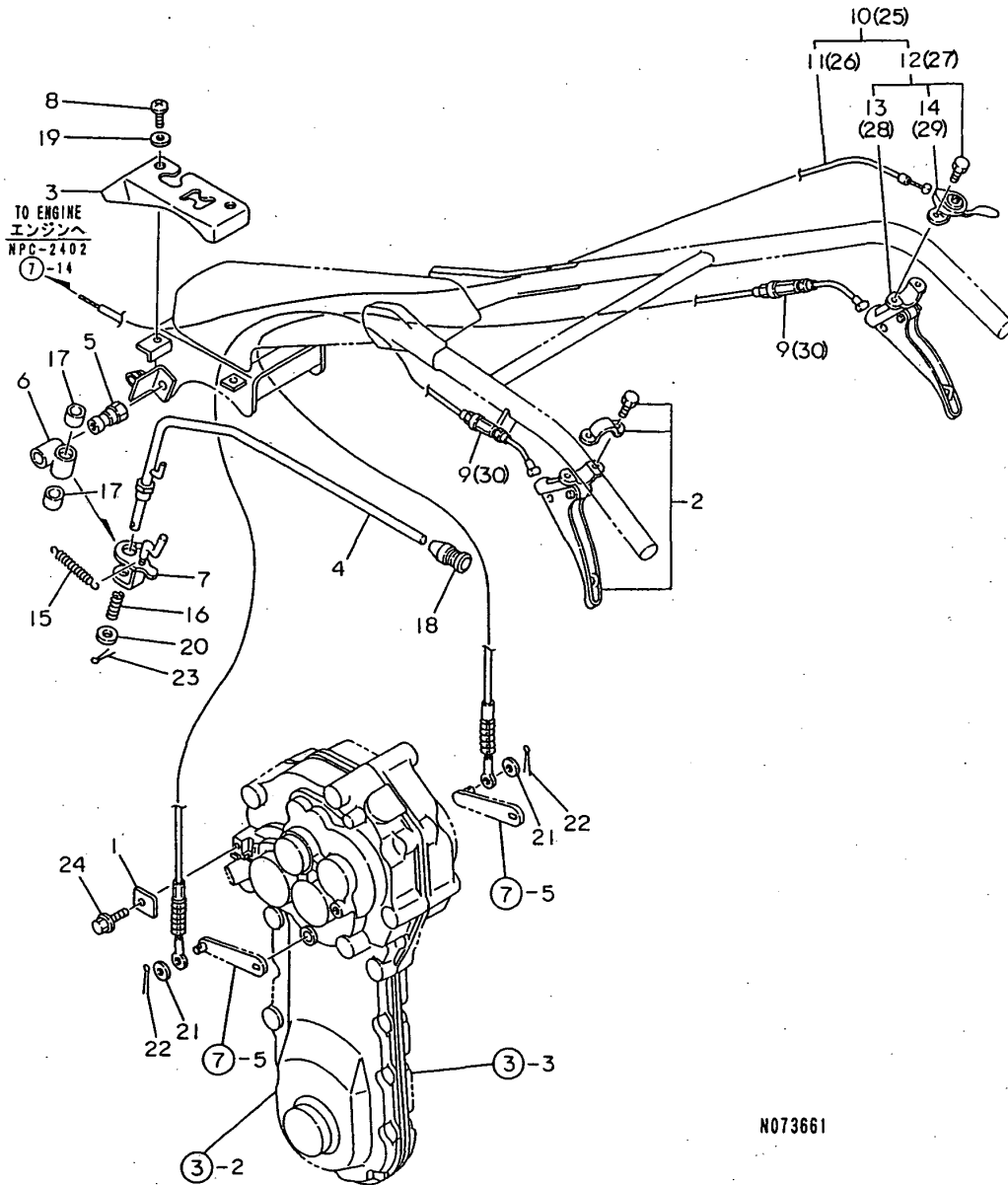
Remarks

(1)EXCLUSIVE FOR YK682FL,782FL.

N:Old $\xrightarrow{\text{Yes}}$ New, Q:Old $\xrightarrow{\text{No}}$ New, R:Old $\xrightarrow{\text{Yes}}$ New, S:Old $\xrightarrow{\text{No}}$ New, W:Add, Z:Discontinued, F:Interchangeable by set, K:Q'ty Change

Fig.12. CONTROL LEVER 1

12. CONTROL LEVER 1



N073661

Remarks
(1)EXCLUSIVE FOR YK682FL,782FL.

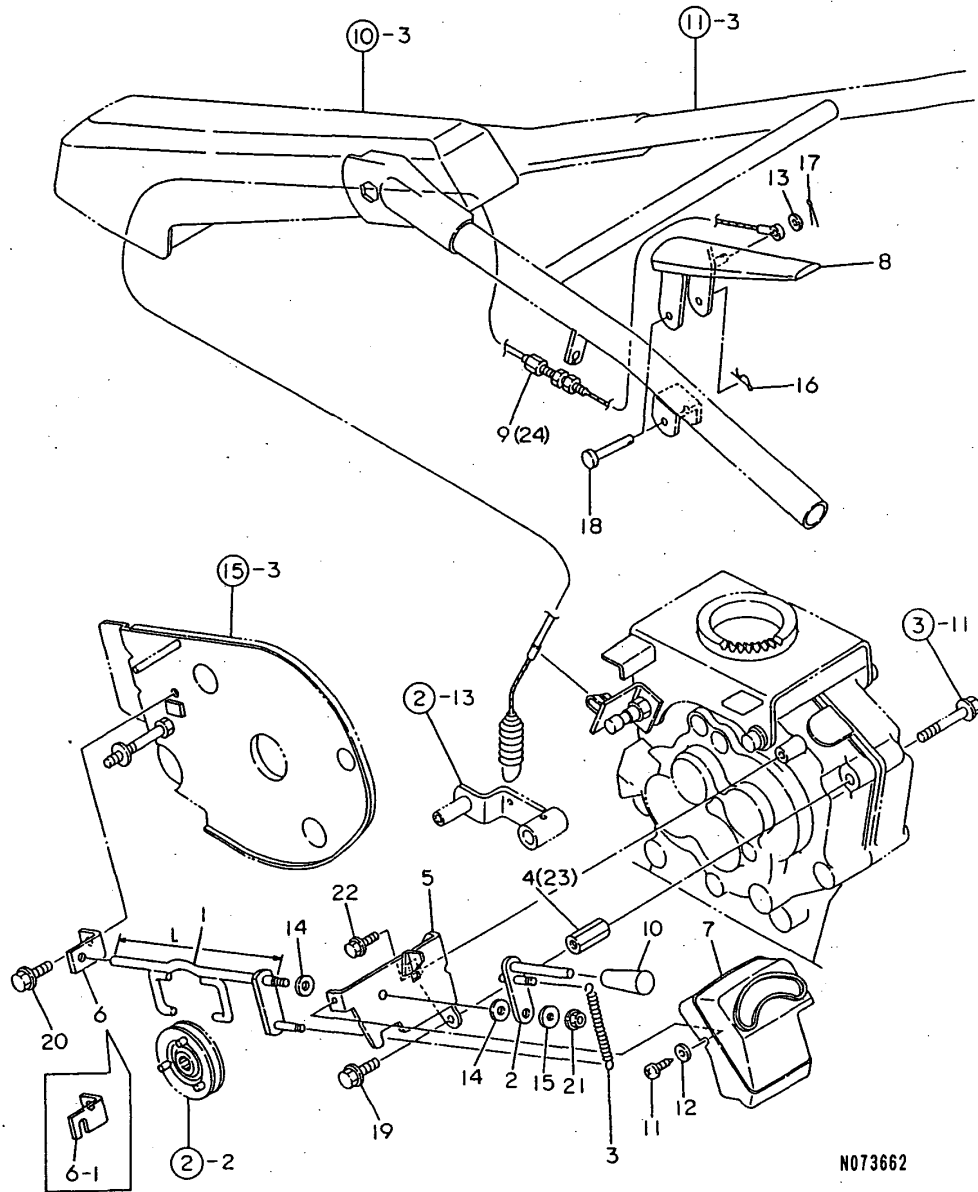
(A)=YK682C
(B)=YK682G
(C)=YK782C

(D)=YK782G
(E)=YK682P,FL
(F)=YK782P,FL

REF.	LEV.	PARTS NO.	DESCRIPTION	QTY						I	R
				(A)	(B)	(C)	(D)	(E)	(F)		
1	1	1A1470-10350	CLAMP,SD.CLUTCH WIRE	2	2	2	2	2	2		
2	1	7C6220-52840	SD.CLUTCH LEVER L AS	1	1	1	1	1	1		
3	1	1A2000-55061	COVER,CHANGE	1	1	1	1	1	1		
4	1	1A2000-55090	LEVER COMP.,CHANGE	1	1	1	1	1	1		
5	1	1A2000-55150	PIN,CHG.LVR.FULCRUM	1	1	1	1	1	1		
6	1	1A2000-55160	FULCRUM CMP,CHG.LVR.	1	1	1	1	1	1		
7	1	1A2000-55202	PLATE COMP.,CHANGE	1	1	1	1	1	1		
8	1	1A1735-55350	SCREW 6X12,PAN HD.	2	2	2	2	2	2		
9	1	1A2000-55800	WIRE,SIDE CLUTCH	2	2	2	2	2	2		
10	1	1A2009-55800	LEVER R SET,SD.CLTCH	1	1	1	1	1	1		
11	2	1A2000-55620	WIRE,ACCELERATOR	1	1	1	1	1	1		
12	2	1A1479-55780	LEVER R,SIDE CLUTCH	1	1	1	1	1	1		
13	3	7C6220-52910	SD.CLUTCH LEVER R AS	1	1	1	1	1	1		
14	3	1A1479-55790	ACCELERAT.LEVER	1	1	1	1	1	1		
15	1	1A2000-55830	SPRING,CHANGE LEVER	1	1	1	1	1	1		
16	1	1A1104-56030	SPRING,CHANGE LEVER	1	1	1	1	1	1		
17	1	1A1105-57151	METAL,CHANGE LEVER	2	2	2	2	2	2		
18	1	1E6570-65750	GRIP,CONT.LEVER BLK.	1	1	1	1	1	1		
19	1	1A1750-90160	WASHER 6, PLAIN	2	2	2	2	2	2		
20	1	22117-120000	WASHER 12	1	1	1	1	1	1		
21	1	22137-060000	WASHER 6, POLISHED	2	2	2	2	2	2		
22	1	22417-200100	COTTER PIN 2.0X10	2	2	2	2	2	2		
23	1	22417-200180	COTTER PIN 2.0X18	1	1	1	1	1	1		
24	1	26476-060142	BOLT M 6X 14,TAPPING	2	2	2	2	2	2		
25	1	1A2019-55800	LEVER R SET,SD.CLTCH							1	1
26	2	1A2019-55820	WIRE, ACCELERATOR							1	1
27	2	1A1479-55780	LEVER R,SIDE CLUTCH							1	1
28	3	7C6220-52910	SD.CLUTCH LEVER R AS							1	1
29	3	1A1479-55790	ACCELERAT.LEVER							1	1
30	1	1A2019-55850	WIRE,SIDE CLUTCH							2	2

Fig.13. CONTROL LEVER 2

13. CONTROL LEVER 2



Remarks

- (1)L= REFER.NO.1 204M/M,1-1 236M/M.
- (2)EXCLUSIVE FOR YK682FL,782FL.

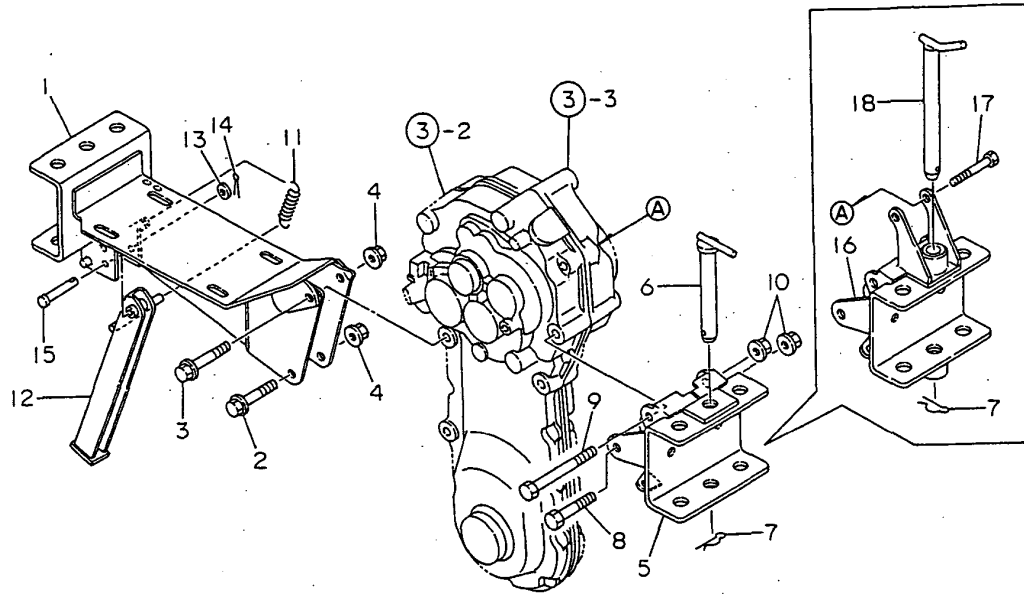
(A)=YK682C
(B)=YK682G
(C)=YK782C

(D)=YK782G
(E)=YK682P,FL
(F)=YK782P,FL

REF.	LEV.	PARTS NO.	DESCRIPTION	QTY						I	R
				(A)	(B)	(C)	(D)	(E)	(F)		
1	1	1A2009-55101	GRIP,CONT.LEVER BLK.	1	1	1	1				1
1-1	1	1A2016-55151	SHIFT LEVER ASSY	1	1	1	1	1	1	1	S 1
		(A=F000237) (B=F000237) (C=F000201) (D=F000201)									
2	1	1A2009-55200	ARM COMP.,SWITCHING	1	1	1	1	1	1	1	
3	1	1A2009-55240	SPRING 8X60,TENSION	1	1	1	1	1	1	1	
4	1	1A2009-55250	NUT M8X34,LONG	1	1	1	1	1	1	1	Z
		(B=F000843) (D=F000436)									
5	1	1A2009-55280	FULCRUM A COMPL.	1	1	1	1	1	1	1	
6	1	1A2009-55310	FULCRUM B	1	1	1	1				
6-1	1	1A2016-55380	FULCRUM B	1	1	1	1	1	1	1	S
		(A=F000237) (B=F000237) (C=F000201) (D=F000201)									
7	1	1A2009-55350	COVER,SUB-CHANGE	1	1	1	1	1	1	1	
8	1	1A2009-55400	LEVER COMP.,DEADMAN	1	1	1	1	1	1	1	
9	1	1A2009-55750	WIRE CMP,MAIN CLUTCH	1	1	1	1	1	1	1	
10	1	1E7250-63300	GRIP,RED	1	1	1	1	1	1	1	
11	1	1A1750-90050	SCREW 5X10,TAPPING	1	1	1	1	1	1	1	
12	1	1A1750-90150	WASHER 5,PLAIN	1	1	1	1	1	1	1	
13	1	22137-060000	WASHER 6, POLISHED	1	1	1	1	1	1	1	
14	1	22137-080000	WASHER 8, POLISHED	2	2	2	2	2	2	2	
15	1	22157-060000	WASHER 6	1	1	1	1	1	1	1	
16	1	22360-060000	SNAP PIN 6	1	1	1	1	1	1	1	
17	1	22417-200100	COTTER PIN 2.0X10	1	1	1	1	1	1	1	
18	1	22486-080400	PIN 8X 40	1	1	1	1	1	1	1	
19	1	26107-080162	BOLT M 8X 16 PLATED	1	1	1	1	1	1	1	
20	1	26107-080162	BOLT M 8X 16 PLATED	1	1	1	1	1	1	1	
21	1	26367-060002	NUT M 6	1	1	1	1	1	1	1	
22	1	26476-060142	BOLT M 6X 14,TAPPING	1	1	1	1	1	1	1	
23	1	1A2019-55250	STUD M8X30.8		1		1				W
		(B=F000843) (D=F000436)									
24	1	1A2019-55750	WIRE COMP.,MN.CLUTCH							1	1 2

Fig.14. ENGINE FRAME & HITCH

14. ENGINE FRAME & HITCH



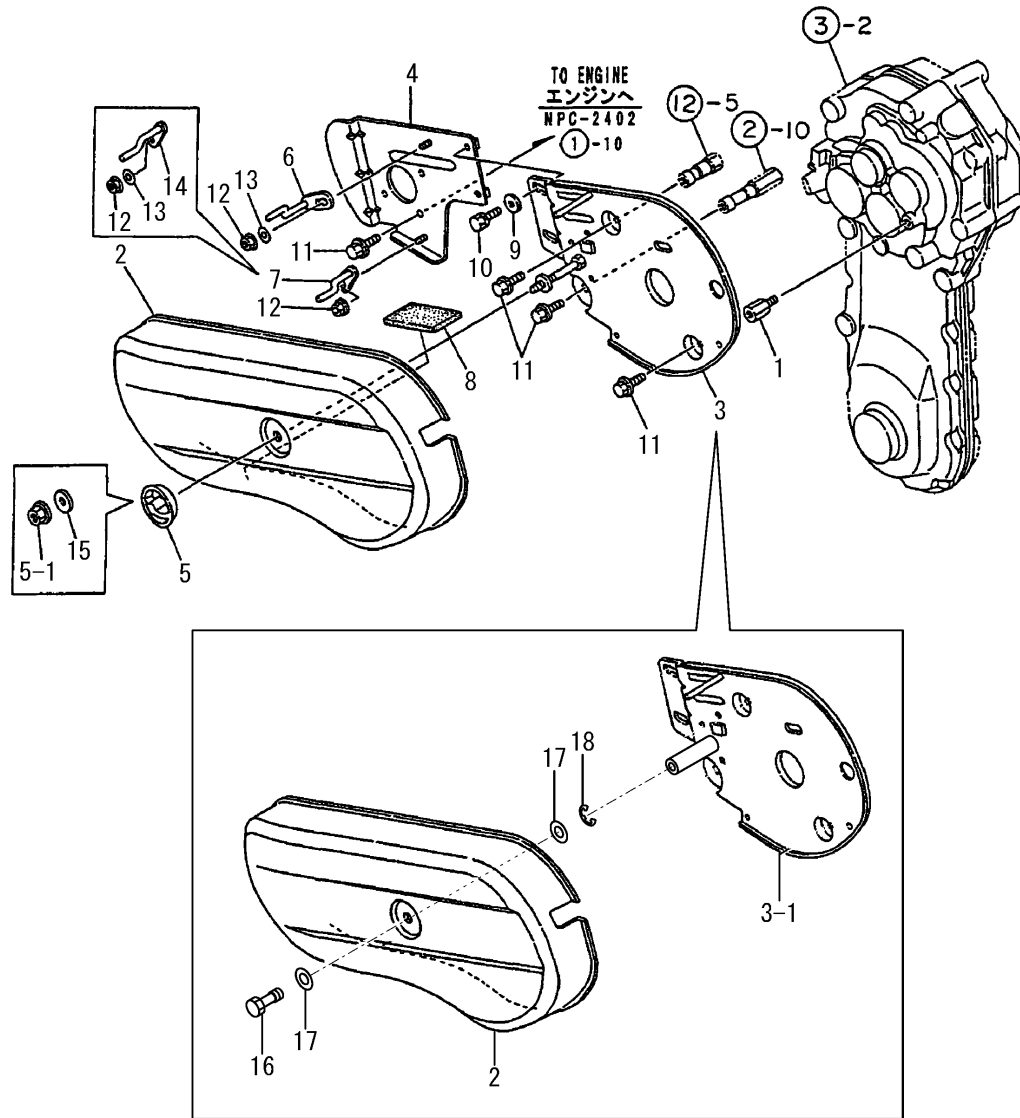
OCNP2-G57500 14. ENGINE FRAME & HITCH

(A)=YK682C
(B)=YK682G
(C)=YK782C

(D)=YK782G
(E)=YK682P,FL
(F)=YK782P,FL

REF.	LEV.	PARTS NO.	DESCRIPTION	QTY						I	R
				(A)	(B)	(C)	(D)	(E)	(F)		
1	1	1A2009-61000	FRAME COMP.,ENGINE	1	1	1	1	1	1		
2	1	26137-100502	BOLT M10X50,COLLAR	1	1	1	1	1	1		
3	1	26137-100602	BOLT M10X 60 PLATED	1	1	1	1	1	1		
4	1	26377-100002	U-NUT M10	2	2	2	2	2	2		
5	1	1A2009-61200 (B=F000843)	HITCH 95-C COMPL. (D=F000436)	1	1	1	1	1	1		Z
6	1	1A1040-81100 (B=F000843)	PIN, HITCH (D=F000436)	1	1	1	1	1	1		Z
6-1	1	1S0203-46000	PIN, HITCH	1		1		1	1		N
7	1	22360-160000 (A=FXXXXXX)	SNAP PIN 16 (C=FXXXXXX)	1	1	1	1	1	1		
8	1	26156-100552	BOLT M10X 55 PLATED	1	1	1	1	1	1		
9	1	26156-100952	BOLT 10X95	1	1	1	1	1	1		
10	1	26367-100002	U-NUT M10	2	2	2	2	2	2		
11	1	1A1105-16001	SPRING,MN.CLTCH LVR.	1	1	1	1	1	1		
12	1	1A2000-61300	STAND COMPL.	1	1	1	1	1	1		
13	1	22137-080000	WASHER 8, POLISHED	1	1	1	1	1	1		
14	1	22417-200180	COTTER PIN 2.0X18	1	1	1	1	1	1		
15	1	22486-080400	PIN 8X 40	1	1	1	1	1	1		
16	1	1A2019-61200 (B=F000843)	HITCH 95-G COMPL. (D=F000436)		1		1				W
17	1	26116-080552 (B=F000843)	BOLT 8X55 (D=F000436)		1		1				W
18	1	1A2019-61350 (B=F000843)	PIN 160 COMP.,HITCH (D=F000436)		1		1				W

Fig.15. BELT COVER



(A)=YK682C
(B)=YK682G
(C)=YK782C

(D)=YK782G
(E)=YK682P,FL
(F)=YK782P,FL

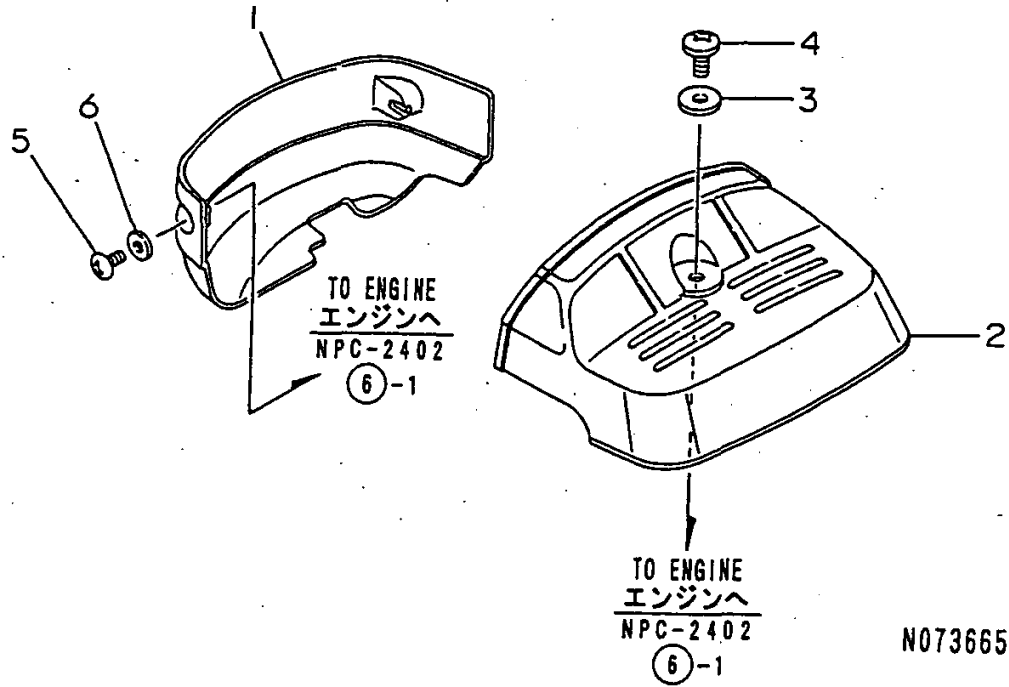
REF.	LEV.	PARTS NO.	DESCRIPTION	QTY						I	R
				(A)	(B)	(C)	(D)	(E)	(F)		
1	1	1A1490-10340	STUD 22.5,BACK COVER	1	1	1	1	1	1		
2	1	1A2009-62060	COVER EW,BELT	1	1	1	1				
2-1	1	1A2009-62061	COVER EW,BELT	1	1	1	1	1	1	1	R
3	1	1A2009-62100	COVER EW COMP.,REAR	1	1	1	1	1	1	1	
3-1	1	1A2009-62200	BACK COVER CMP	1	1	1	1	1	1	1	F
4	1	1A2000-62200	GUARD COMP.,PULLEY	1	1	1	1				
4-1	1	1A2000-62201	GUARD COMPL.,PULLEY	1	1	1	1	1	1	1	N
5	1	1A2000-62300	KNOB,BELT COVER	1	1	1	1	1	1	1	
5-1	1	26367-080002	U-NUT M 8	1	1	1	1	1	1	1	S
5-2	1	26367-080002	NUT, 8	1	1	1	1	1	1	1	Z
6	1	1A2009-62400	RETAINER EW CMP,BELT	1	1	1	1				
6-1	1	1A2009-62401	RETAINER EW CMP,BELT	1	1	1	1	1	1	1	R
7	1	1A2009-62420	RETAINER B CMP.,BELT	1	1	1	1				
7-1	1	1A2009-62421	RETAINER B CMP.,BELT	1	1	1	1				R
7-2	1	1A2009-62421	RETAINER B CMP.,BELT	1	1	1	1				Z
8	1	1A2009-62480	SEAT 100X60X5	1	1	1	1	1	1	1	
9	1	22137-080000	WASHER 8, POLISHED	2	2	2	2	2	2	2	
10	1	26013-080144	BOLT 8X14	2	2	2	2	2	2	2	
11	1	26107-080122	BOLT M 8X 12 PLATED	6	6	6	6	6	6	6	
12	1	26367-060002	NUT M 6	2	2	2	2	2	2	2	
13	1	22137-060000	WASHER 6, POLISHED	2	2	2	2	2	2	2	W
14	1	1A2001-62400	RETAINER CMP,BELT LW	1	1	1	1				W
14-1	1	1A2001-62401	RETAINER CMP,BELT LW	1	1	1	1	1	1	1	N
15	1	22157-080000	WASHER 8	1	1	1	1	1	1	1	W
15-1	1	22157-080000	WASHER 8	1	1	1	1	1	1	1	Z
16	1	1A2132-62050	BOLT	1	1	1	1	1	1	1	W
17	1	22137-080000	WASHER 8, POLISHED	2	2	2	2	2	2	2	W
18	1	22272-000060	CIRCLIP E- 6	1	1	1	1	1	1	1	W

Remarks

(1)INTERCHANGEABLE BY SIMULTANEOUS REPLACEMENT WITH REF.16,17 & 18.

Fig.16. BONNET

16. BONNET



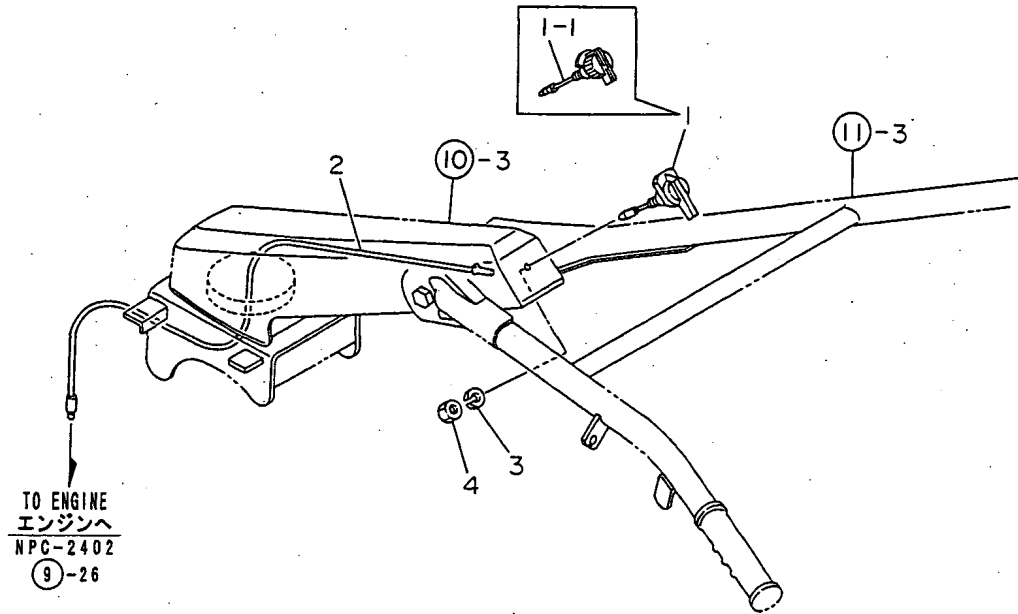
(A)=YK682C
(B)=YK682G
(C)=YK782C

(D)=YK782G
(E)=YK682P,FL
(F)=YK782P,FL

REF.	LEV.	PARTS NO.	DESCRIPTION	Q'TY						I	R
				(A)	(B)	(C)	(D)	(E)	(F)		
1	1	1A2000-64100	MASK, FRONT	1	1	1	1	1	1		
2	1	1A2019-64200	COVER 55,REAR	1	1	1	1	1	1		
3	1	1A2000-64210	WASHER 6X19X1.0	1	1	1	1	1	1		
4	1	1A2000-64220	SCREW 6X16	1	1	1	1	1	1		
5	1	1A1750-90050	SCREW 5X10,TAPPING	2	2	2	2	2	2		
6	1	1A1750-90150	WASHER 5,PLAIN	2	2	2	2	2	2		

Fig.17. ELECTRICAL PARTS

17. ELECTRICAL PARTS



OCNP2-G57500 17. ELECTRICAL PARTS

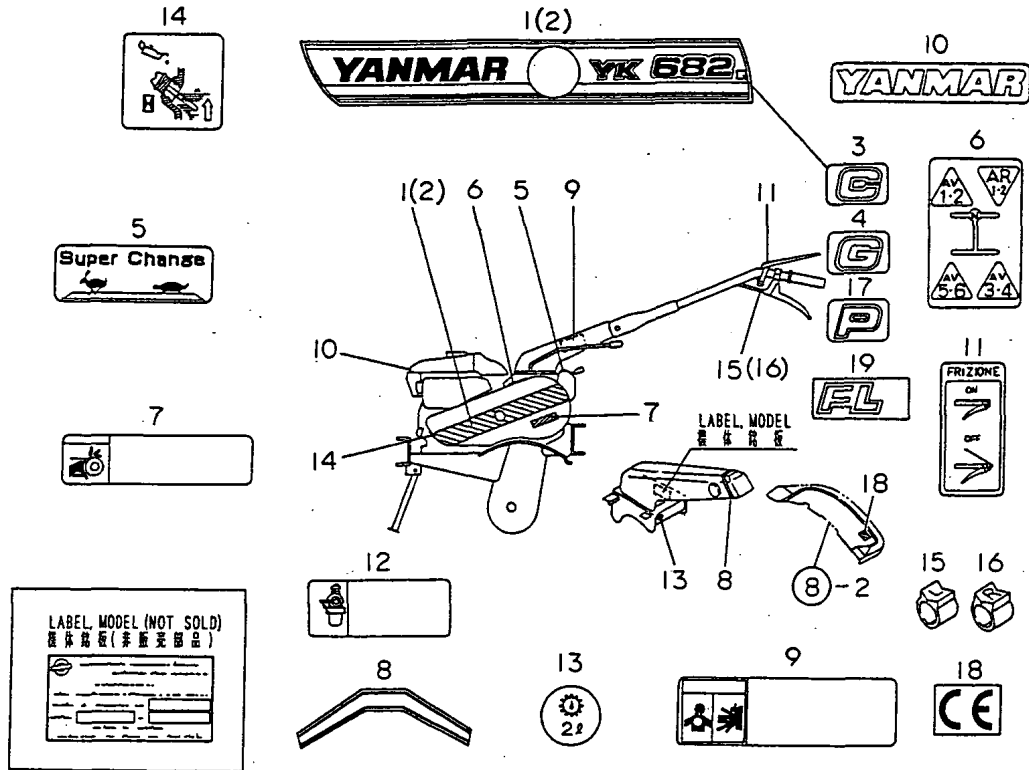
(A)=YK682C
(B)=YK682G
(C)=YK782C

(D)=YK782G
(E)=YK682P,FL
(F)=YK782P,FL

REF.	LEV.	PARTS NO.	DESCRIPTION	Q'TY						I	R
				(A)	(B)	(C)	(D)	(E)	(F)		
1	1	1A1470-40900	SWITCH,STOP	1	1	1	1				
1-1	1	1A1750-40800	SWITCH,STOP	1	1	1	1	1	1	1	S
		(A=F000237) (B=F000237) (C=F000201) (D=F000201)									
2	1	1A2000-83100	CORD,STOP SWITCH	1	1	1	1	1	1	1	
3	1	22217-080000	SPRING WASHER 8	1	1	1	1	1	1	1	
4	1	26757-080002	LOCK NUT M 8 PLATED	1	1	1	1	1	1	1	

Fig.18. LABELS

18. LABELS



N073667

(A)=YK682C
(B)=YK682G
(C)=YK782C

(D)=YK782G
(E)=YK682P,FL
(F)=YK782P,FL

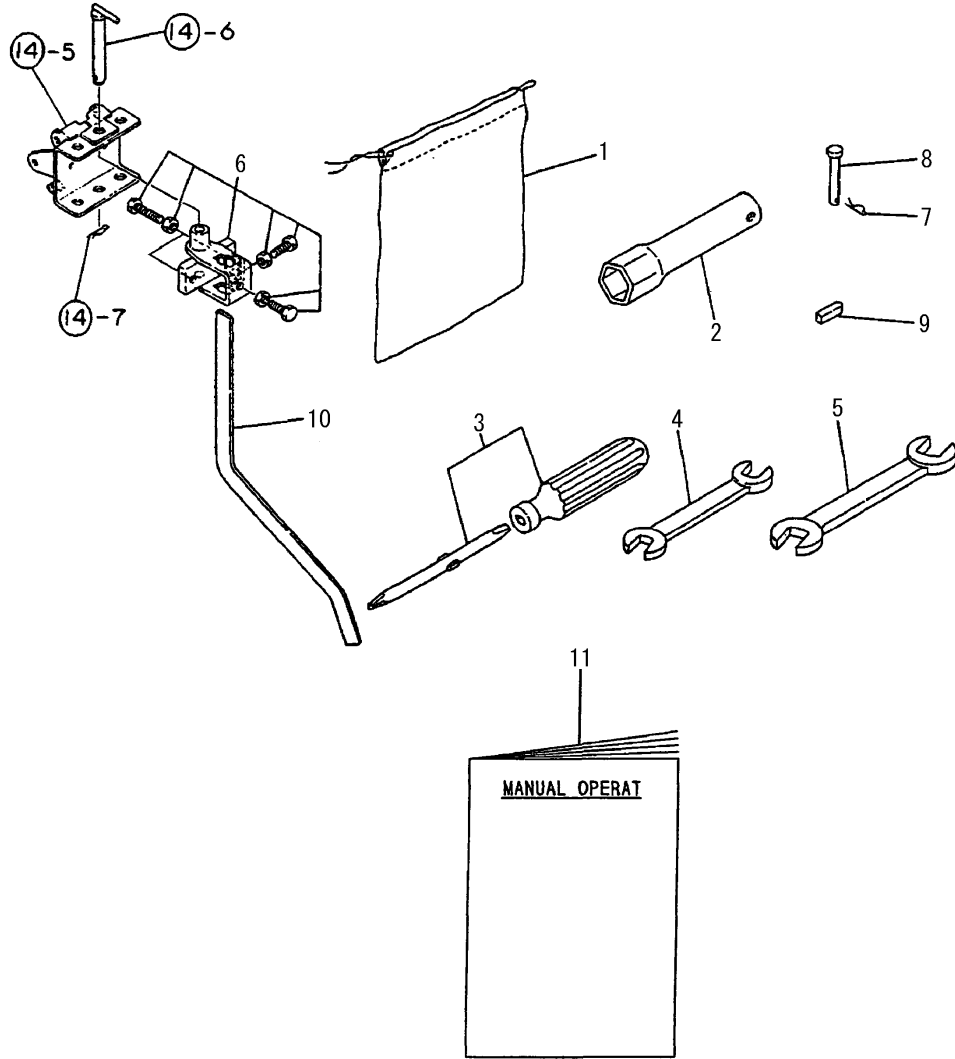
REF.	LEV.	PARTS NO.	DESCRIPTION	QTY						I	R
				(A)	(B)	(C)	(D)	(E)	(F)		
1	1	1A2019-86110	LABEL 682,BELT COVER	1	1			1			
2	1	1A2019-86120	LABEL 782,BELT COVER				1	1		1	
3	1	1A2019-86150	MARK C	1		1					
4	1	1A2019-86170	MARK G		1		1				
5	1	1A2009-86200	LABEL,SUB-CHANGE	1	1	1	1	1	1	1	
6	1	1A2009-86250	LABEL,CHANGE	1	1	1	1	1	1	1	
7	1	1A2099-86300	LABEL,CVR.SAFETY	1	1	1	1	1	1	1	
8	1	1A2000-86310	LABEL,HANDLE FRAME	1	1	1	1	1	1	1	
9	1	1A2099-86320	LABEL,CAUTION	1	1	1	1	1	1	1	
10	1	1A2130-86320	LABEL,FUEL TANK	1	1	1	1	1	1	1	
11	1	1A2009-86340	LABEL,MAIN CLUTCH	1	1	1	1	1	1	1	
12	1	1A2099-86360	LABEL,FUEL COCK	1	1	1	1	1	1	1	
13	1	1A2009-86701	LABEL,OIL 2	1	1	1	1	1	1	1	
14	1	1A2099-86820	LABEL,ENG.OIL,ITA	1	1	1	1	1	1	1	
15	1	1A1103-88800	BAND L,MARK	1	1	1	1	1	1	1	
16	1	1A1103-88810	BAND R,MARK	1	1	1	1	1	1	1	
17	1	1A2138-86150	MARK P							1	1
18	1	1A6150-92550	MARK CE	1	1	1	1	1	1	1	W
				(A=FXXXXXX)	(B=F001148)	(C=FXXXXXX)	(D=FXXXXXX)	(E=F001018)	(F=F000456)		
18-1	1	1E1061-86610	MARK CE	1	1	1	1	1	1	1	N
				(A=FXXXXXX)	(B=F001148)	(C=FXXXXXX)	(D=FXXXXXX)	(E=F001373)	(F=F000701)		
18-2	1	1E1061-86610	MARK CE	1	1	1	1	1	1	1	Z
				(A=FXXXXXX)	(B=F001482)	(C=FXXXXXX)	(D=FXXXXXX)	(E=F001632)	(F=F000831)		
19	1	1A1479-86210	MARK (FL)							1	1

Remarks

(1)EXCLUSIVE FOR YK682FL,782FL.

N:Old $\begin{matrix} \text{Yes} \\ \text{No} \end{matrix}$ New, Q:Old $\begin{matrix} \text{No} \\ \text{Yes} \end{matrix}$ New, R:Old $\begin{matrix} \text{Yes} \\ \text{No} \end{matrix}$ New, S:Old $\begin{matrix} \text{No} \\ \text{Yes} \end{matrix}$ New, W:Add, Z:Discontinued, F:Interchangeable by set, K:Q'ty Change

Fig.19. LABELS & ACCESSORIES(ADD.ITEM)



0CNP2-G57500 19. LABELS & ACCESSORIES(ADD.ITEM)

(A)=YK682C
(B)=YK682G
(C)=YK782C

(D)=YK782G
(E)=YK682P,FL
(F)=YK782P,FL

REF.	LEV.	PARTS NO.	DESCRIPTION	Q'TY						I	R
				(A)	(B)	(C)	(D)	(E)	(F)		
1	1	1A1750-83900	TOOL BAG	1	1	1	1	1	1		
2	1	160110-92700	BOX, SPANNER	1	1	1	1	1	1		
3	1	160330-92730	SCREWDRIVER (+)	1	1	1	1				
3-1	1	1D2040-87060	SCREWDRIVER,COMBINAT	1	1	1	1	1	1		R
		(A=FXXX) (B=FXXX) (C=FXXX) (D=FXXX)									
4	1	28110-100120	WRENCH 10X12	1	1	1	1	1	1		
5	1	28110-120140	WRENCH 12X14	1	1	1	1	1	1		
6	1	7S0070-15000	UNIVIR SAL HITCH	1	1	1	1				
7	1	22372-060000	SNAP PIN 6	2	2	2	2	2	2		
8	1	22487-060400	PIN 6X 40	2	2	2	2	2	2		
9	1	22550-050201	KEY 5X20	1	1	1	1	1	1		
10	1	1S0090-60000	BAR,RESISTANCE				1				
11	1	1A2009-88002	MANUAL	1	1	1	1	1	1		W
		(A=FZZZZZ) (B=FZZZZZ) (C=FZZZZZ) (D=FZZZZZ) (E=FZZZZZ) (F=FZZZZZ)									

Part Number Index

All parts are stipulated in the order of part numbers.

(Depending on the area in which the part is used.)

This index will display the location of the part according to each part number.

PARTS No. INDEX

PARTS No.	Fig.	Ref.No.
160110-92700	19	2
160330-92730	19	3
192040-56220	11	4
1A1040-81100	14	6
1A1103-88800	18	15
1A1103-88810	18	16
1A1104-28230	6	4
1A1104-56030	12	16
1A1105-16001	14	11
1A1105-23210	2	3
1A1105-57151	12	17
1A1220-28290	3	7
1A1470-10350	12	1
1A1470-20090	3	1
1A1470-20700	7	1
1A1470-40301	10	1
1A1470-40900	17	1
1A1479-23480	5	2
1A1479-55780	12	12
		27
1A1479-55790	12	14
		29
1A1479-86210	18	19
1A1490-10340	15	1
1A1540-46020	9	20
1A1735-55350	12	8
1A1750-40800	17	1 -1
1A1750-83900	19	1
1A1750-90050	10	12
	13	11
	16	5
1A1750-90150	10	13
	13	12
	16	6
1A1750-90160	12	19
1A2000-13100	2	10
1A2000-13190	2	11
1A2000-13200	2	12
1A2000-21100	3	2
1A2000-21110	3	3
1A2000-21150	3	4
1A2000-21160	3	5
1A2000-21200	3	6
1A2000-23012	4	2
1A2000-23020	4	4
1A2000-23070	4	5
1A2000-23100	4	17
1A2000-23200	4	13
1A2000-23251	4	14
1A2000-23301	5	1

PARTS No.	Fig.	Ref.No.
1A2000-24520	5	6
1A2000-24530	5	7
1A2000-24550	5	8
1A2000-24600	5	9
1A2000-27010	6	1
1A2000-27051	6	2
1A2000-27100	6	3
1A2000-27530	7	2
1A2000-27600	7	3
1A2000-27650	7	4
1A2000-27700	7	5
1A2000-27750	7	6
1A2000-27800	7	7
1A2000-27840	7	8
1A2000-51000	10	2
1A2000-51100	10	3
1A2000-51101	10	3 -1
1A2000-51250	10	4
1A2000-51280	10	5
1A2000-51310	10	6
1A2000-51320	10	7
1A2000-51330	10	8
1A2000-51350	10	9
1A2000-51400	11	1
1A2000-51430	11	2
1A2000-51450	10	10
1A2000-55061	12	3
1A2000-55090	12	4
1A2000-55150	12	5
1A2000-55160	12	6
1A2000-55202	12	7
1A2000-55241	6	5
1A2000-55620	12	11
1A2000-55800	12	9
1A2000-55830	12	15
1A2000-61300	14	12
1A2000-62200	15	4
1A2000-62201	15	4 -1
1A2000-62300	15	5
1A2000-64100	16	1
1A2000-64210	16	3
1A2000-64220	16	4
1A2000-83100	17	2
1A2000-86310	18	8
1A2001-13050	2	9 -1
1A2001-13051	2	9 -2
1A2001-13100	2	14 -1
1A2001-15000	1	11 -1
1A2001-15001	1	11 -2
1A2001-21250	3	12 -1

PARTS No.	Fig.	Ref.No.
1A2001-62400	15	14
1A2001-62401	15	14 -1
1A2009-13300	2	1
1A2009-13301	2	1 -1
1A2009-13341	2	2
1A2009-13342	2	2 -1
1A2009-13510	2	13
1A2009-13540	2	14
1A2009-15000	1	10 -1
1A2009-15001	1	10 -2
1A2009-23000	4	1
1A2009-23030	4	3
1A2009-23100	4	10
1A2009-23140	4	11
1A2009-24501	5	4
1A2009-24511	5	5
1A2009-51600	11	3
1A2009-55101	13	1
1A2009-55200	13	2
1A2009-55240	13	3
1A2009-55250	13	4
1A2009-55280	13	5
1A2009-55310	13	6
1A2009-55350	13	7
1A2009-55400	13	8
1A2009-55750	13	9
1A2009-55800	12	10
1A2009-61000	14	1
1A2009-61200	14	5
1A2009-62060	15	2
1A2009-62061	15	2 -1
1A2009-62100	15	3
1A2009-62200	15	3 -1
1A2009-62400	15	6
1A2009-62401	15	6 -1
1A2009-62420	15	7
1A2009-62421	15	7 -1
		7 -2
1A2009-62480	15	8
1A2009-86200	18	5
1A2009-86250	18	6
1A2009-86340	18	11
1A2009-86701	18	13
1A2009-88002	19	11
1A2015-31210	9	7
		16
1A2016-55151	13	1 -1
1A2016-55380	13	6 -1
1A2019-12000	1	8
1A2019-23060	4	16

PARTS No.	Fig.	Ref.No.
1A2019-31010	9	1
1A2019-31020	9	10
1A2019-31100	9	19
1A2019-32000	8	1
1A2019-32010	8	2
1A2019-32100	8	3
1A2019-32110	8	4
1A2019-51700	11	9
1A2019-55250	13	23
1A2019-55750	13	24
1A2019-55800	12	25
1A2019-55820	12	26
1A2019-55850	12	30
1A2019-61200	14	16
1A2019-61350	14	18
1A2019-64200	16	2
1A2019-86110	18	1
1A2019-86120	18	2
1A2019-86150	18	3
1A2019-86170	18	4
1A2040-31030	9	2
1A2040-31040	9	11
1A2040-31050	9	3
		12
1A2040-31070	9	4
		13
1A2040-31090	9	5
		14
1A2040-31100	9	6
		15
1A2099-86300	18	7
1A2099-86320	18	9
1A2099-86360	18	12
1A2099-86820	18	14
1A2130-86320	18	10
1A2132-62050	15	16
1A2138-32090	8	7
1A2138-32150	8	8
1A2138-86150	18	17
1A6150-92550	18	18
1D1140-11420	1	1
		7
1D2040-87060	19	3 -1
1E1061-86610	18	18 -1
		18 -2
1E4060-10040	2	9
1E4060-74090	4	6
1E6102-84970	11	6
1E6150-56040	6	6
1E6570-65750	10	11

MODEL : YK682,782 ()
PC NO : 0CNP2-G57500

PARTS No. INDEX

PARTS No.	Fig.	Ref.No.
1E6570-65750	11	5
	12	18
1E7250-63300	13	10
1S0090-60000	19	10
1S0203-46000	14	6 -1
7C6220-52840	12	2
7C6220-52910	12	13
		28
7S0070-15000	19	6

PARTS No.	Fig.	Ref.No.
-----------	------	---------

PARTS No.	Fig.	Ref.No.
-----------	------	---------

PARTS No.	Fig.	Ref.No.
-----------	------	---------



YANMAR CO.,LTD.